



EIZO

*Quality
on Display*

FlexScan® L557

**43 cm (17")
COLOR LCD MONITOR**

Perfectly Positioned

Digital and analog connectivity, wide 170° viewing angles, and a compact, ergonomically designed cabinet are just three reasons why the FlexScan L557 is perfectly positioned to meet all the display requirements of corporate, back office, and administrative professionals. With wide-ranging image adjustment functions, 500:1 contrast ratio, and built-in stereo speakers, it is equally suitable for text, web, multimedia, or graphics applications. TCO'03 certification ensures adherence to strict new guidelines for ergonomics and recyclability. Stylish in design and comfortable to use, the FlexScan L557 matches value and versatility with uncompromising quality and performance.



NEW ERGONOMIC DESIGN

With slim 14 mm side bezels, the newly designed cabinet is more space-efficient than ever. Navigating is easier too — control buttons are now arranged in a simple cross pattern, and set on a tiered front panel. The desktop stand allows height adjustment over a 50 mm range, or a VESA-compliant mounting interface lets you install the unit on an adjustable arm or the wall.

FINE CONTRAST

The front-button-operated Fine Contrast function, exclusive to EIZO, accesses five specialized image modes: Text, Picture, Movie, Custom, and sRGB. Each mode has its own settings for parameters such as color temperature, brightness and saturation. Further image adjustments can be made in the OSD menu.

DIGITAL AND ANALOG INPUTS

DVI-D and D-Sub mini 15-pin inputs allow use with a computer incorporating either a digital or an analog graphics card — or both, if two computers are connected at the same time.

FlexScan L557

43 cm (17") COLOR LCD MONITOR

Additional Features

GAMMA CORRECTION

Internal circuitry automatically converts 8-bit data from the PC to 10-bit and back to 8-bit, producing smooth, accurate color tones.

COLOR MANAGEMENT

Support for the sRGB color space provides color matching with other sRGB compliant peripherals.

REGULATORY STANDARDS

Compliance with current international standards relating to safety, ergonomics, and power management as well as "EIZO Eco Products 2002", an in-house label covering such environmental issues as manufacture with lead-free solder and chrome-free steel plates.



Accessories

FP-502

PANEL PROTECTOR

High-transparency screen cover for protection from dust and scratches.

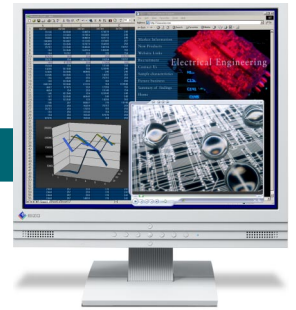
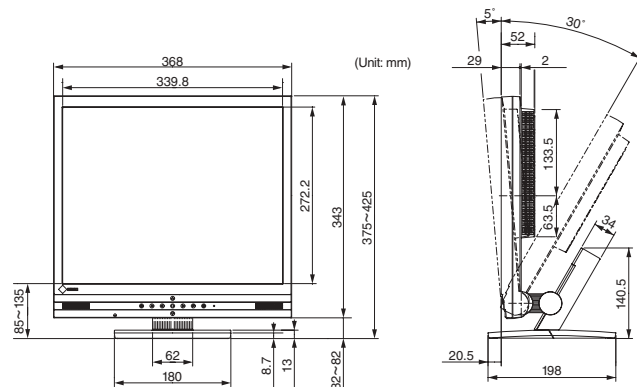


LS-H50-D

HEIGHT ADJUSTABLE STAND

Extends height adjustability to 100 mm and offers tilt/swivel angles of 41°/70°.

Dimensions



Specifications

Panel Size and Type	43 cm (17") TFT color LCD panel
Available Cabinet Colors	Gray, Black
Pixel Pitch	0.264 mm × 0.264 mm
Display Colors	16.7 million
Viewing Angles	H: 170°, V: 170°
Scanning Frequency	Analog: 24.8 – 80 kHz, 50 – 75 Hz Digital: 31 – 64 kHz, 59 – 61 Hz (VGA Text: 69 – 71 Hz)
Recommended Resolution	1280 × 1024
Brightness	250 cd/m ² (typical)
Contrast Ratio	500:1 (typical)
Response Time	25 ms (typical)
Dot Clock	Analog: 135 MHz, Digital: 108 MHz
Input Signals	RGB Analog, DVI Standard 1.0
Input Terminals	D-Sub mini 15 pin, DVI-D 24 pin (switchable)
Active Display Size (H × V)	338 mm × 270 mm
Viewable Image Size	432 mm (diagonal)
Plug & Play	VESA DDC 2B
Screen Control	ScreenManager®, One Touch Auto Adjustment Function
Power Requirements	AC 100 – 120V / 200 – 240V, 50 – 60 Hz
Power Management	VESA DPMS, DVI-DMPM
Power Consumption	45 watts (maximum)
Power Save Mode	Less than 2 watts
OSD Languages	English, French, German, Italian, Japanese, Spanish, Swedish
Dimensions (W × H × D)	With Stand: 368 mm × 375 – 425 mm × 198 mm Without Stand: 368 mm × 343 mm × 52 mm
Net Weight	With Stand: 5.6 kg, Without Stand: 4.2 kg
Audio	Dual 1W built-in speakers, input/headphone jacks
Tilt	30° Up, 5° Down
Certifications and Standards	TCO'03 (gray), TCO'99 (black), TÜV/Ergonomics, TÜV/GS, c-Tick CE, CB, UL 60950: 2000, CSA C22.2 No.60950-00, FCC-B, Canadian ICES-003-B, TÜV/S, VCCI-B, EPA ENERGY STAR®, EIZO Eco Products 2002
Supplied Accessories	AC power cord, signal cable (D-Sub mini 15 pin), audio cable, setup guide, EIZO LCD Utility Disk (ICC profile, HTML user's manual), 4 screws for mount option, warranty registration card

Specifications are subject to change without notice.

Copyright© 2003 Eizo Nanao Corporation. All rights reserved. All product names are trademarks or registered trademarks of their respective companies. Screen Administrator is a trademark, and FlexScan, EIZO, and ScreenManager are registered trademarks of Eizo Nanao Corporation.

EIZO NANA O CORPORATION

153 Shimokashiwano, Matto, Ishikawa 924-8566 Japan

Phone +81-76-277-6792 Fax: +81-76-277-6793

www.eizo.com

